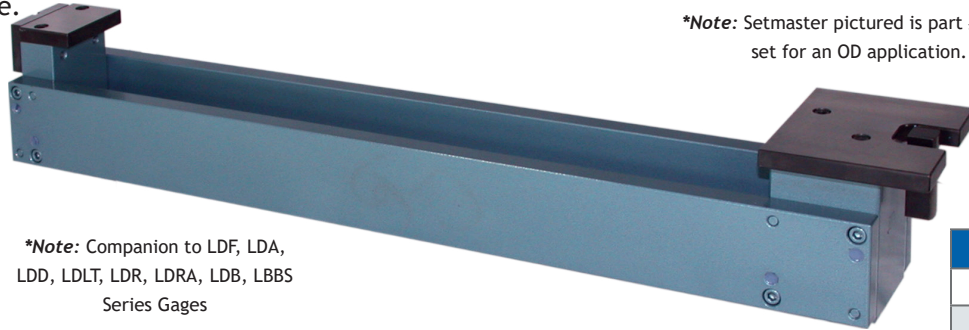


SMF Series setmasters are designed to be used in a production environment where a specific diameter and gaging depth are required. These masters use solid steel rails with precision ground end blocks bolted and doweled in place. A hardened steel restrictor is fixed to one side, while the adjustable anvil features .50" of micrometer style fine adjustment. The anvil can be continuously reset within its .5" range for various dimensions or it can be set, sealed, and pinned to a specific size.



**Note:* Setmaster pictured is part #SMF-18 set for an OD application.

**Note:* Companion to LDF, LDA, LDD, LDLT, LDR, LDRA, LDB, LBBS Series Gages

- Special anvil and restrictor for gage height more than .5"
- Roller rest guides for anvil rest plate
- Set and sealed to a specific size with NIST traceable certification
- Optional Set, seal and pin to size with ISO 17025 compliant certification

MODEL #	RANGE*	METRIC (mm)
SMF-12	0 to 12	150 to 300
SMF-18	12 to 18	150 to 300
SMF-24	18 to 24	301 to 460
SMF-30	24 to 30	301 to 460
SMF-36	30 to 36	461 to 610
SMF-42	36 to 42	461 to 610
SMF-48	42 to 48	611 to 760
SMF-54	48 to 54	611 to 760
SMF-60	54 to 60	761 to 915
<small>*set to a specific size within that range</small>		

SMFC- SERIES SETMASTER



Outrigger assembly for SMF or SSM series masters

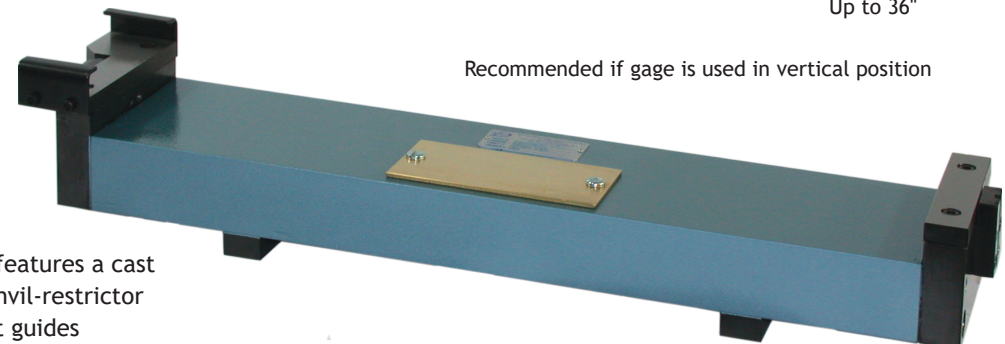
SSM SERIES SOLID FRAME SETMASTER

Solid setmasters are ground to a specific diameter and gaging depth. This setmaster is recommended for close tolerances and dedicated gages. The base can be made from solid steel, cast iron, or aluminum to better match the coefficient of thermal expansion of the part being machined. Anvils made from either hardened steel or carbide are available in a flat and parallel configuration or angular configuration.

Certification options:

- Set and sealed to a specific size with NIST traceable certification
- Set and sealed to ISO 17025 compliant certification

**Note:* Setmaster shown features a cast iron bar base, carbide anvil-restrictor set, and roller rest guides



Recommended if gage is used in vertical position

VERTICAL SETMASTER STANDS



Part# 4350 (used on SMF)



Part# 4394 (used on SMA)
Part# 4395 (used on SSM)
Up to 36"